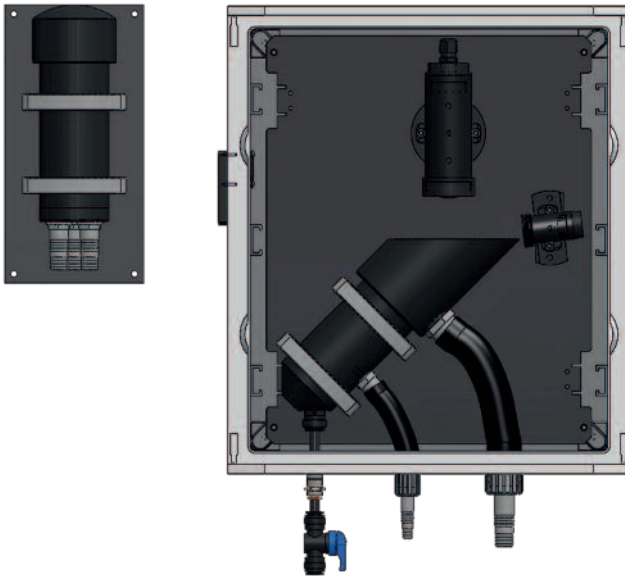


# NEPHELOMETRIC TURBIDITY MEASURING CELL



**S461N** Nephelometric cell



## General features

Turbidity measurement without contact with the sample

90° scattering method compliant with ISO 7027 / EN 27027 with visible light beam

Black rigid PVC sensor body

Optional built-in debubbler device applicable externally

No mechanically moving parts

Measurement pre-processed in the sensor which provides high sensitivity in low-signal transmission

Fast calibration using the pre-calibrated calibration plate, supplied with the instrument

## Applications

Measuring turbidity in primary water upstream of treatment plants, industrial or recirculating water

Measuring turbidity in wastewaters leaving the treatment plant, industrial waters with high levels of turbidity, aggressive media, wastewater containing starch, oils and fats

## Technical specifications

Measuring ranges	0 ÷ 100 ÷ 1000 NTU, (optional 0 ÷ 9999 NTU)
Measuring method	90° Scattering
Precision	±3% of the f.s.
Repeatability	95 %
Response time	2 minutes for 90% of the f.s.
Maximum flow rate	300 L/h
Operating temperature	0 ÷ 50°C
Maximum pressure	2 bar
Contact material	PVC
Power supply	12 ÷ 24Vdc
Cable	10 mt
Calibration	by known point