



BIP STOP



Fixcab

- LEVEL SWITCH FOR AGITATED LIQUIDS

For waste water, sewage in small tanks

This float level switch (NO or NC) allows the automation of small pumps (up to 1.5 HP) thanks to its microswitch of 20 A (400V) or unlimited through a relay.

Thanks to its wide switching angle of 110°, it protects the pump's engine and the electrical panels from jerking. This feature is highly appreciated in agitated liquids.

Also, it can detect the both high and low level in the same tank whose hysteresis does not exceed 1.5 meter.

Allowed fluid densities 0,70 à 1,15 g/cm³

Electric characteristics 250 VCA /VCC 50/60 Hz

Cut-out power 20 (8) A

Maximum pressure 3,5 bars

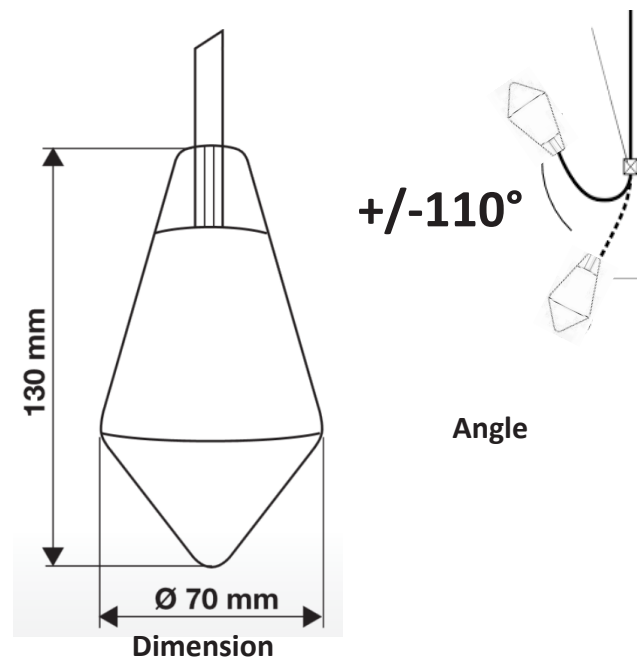
Maximum temperature 85 °C

Protection index IP 68 

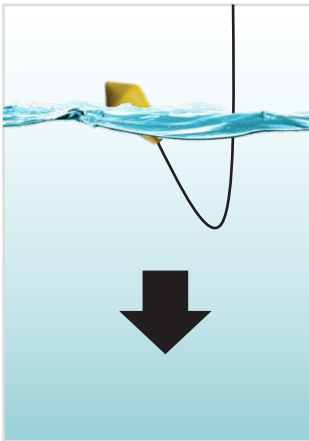
Housing Copolymer polypropylene

Type of cable Neoprene, HR HY 3X1 mm²

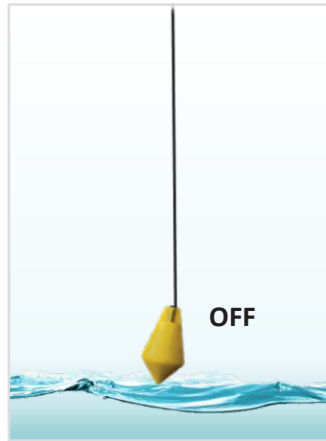
Float weight without cable 105 g



EMPTYING



The pump empties the tank.



When the fluid level drops below the float, the power goes off



Connection

Installations examples

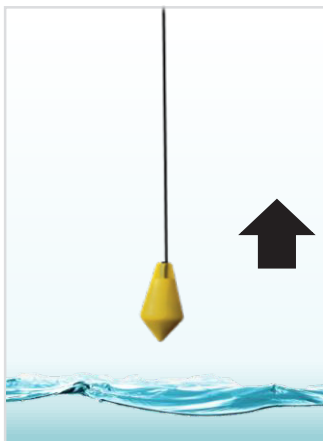


Connection to the pump.

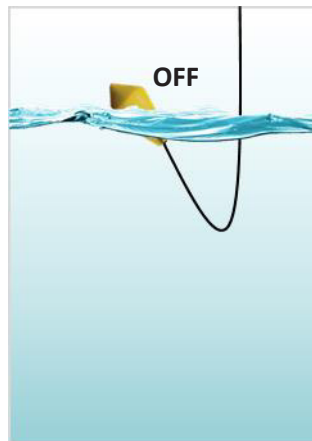


Connecting to an alarm

FILLING



The pump fills the tank.



When the liquid reaches the float, it tilt shut off the power to the pump



Connection



Connecting to a multifunction plug